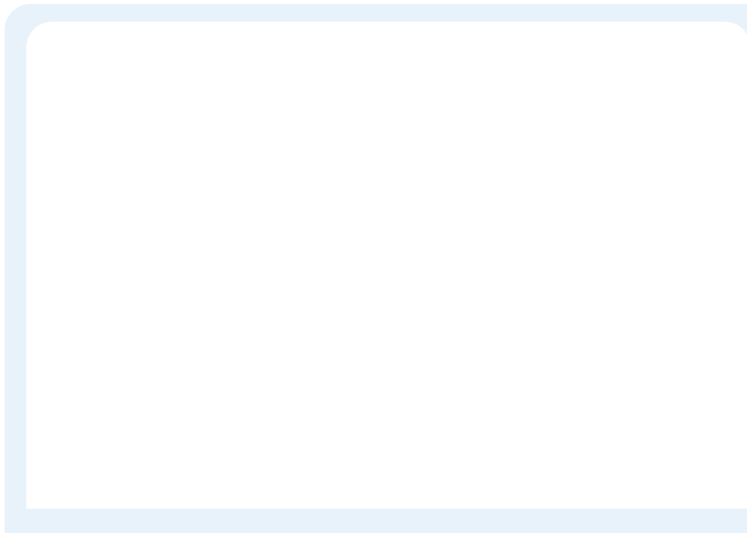


# High-speed calibration device



## Key Features

- ECU calibration and parameter tuning
- Embedded software debugging
- Memory access and data analysis

## I

The TX1000 is a high-speed calibration device that connects to a PC via an RJ45 Ethernet interface. Featuring a driverless design for Windows systems, it offers excellent system compatibility. When used with the powerful TSMaster software, TX1000 supports connections to ARM and AURIX series MCUs. The supported debugging protocol is DAP.

TX1000 supports operations such as modifying the ECU program counter (PC) for jump control, program halt, and resume. Through the debug interface, it enables high-speed memory access to ARM/AURIX-based ECUs without affecting the normal execution of ECU code. In addition, TX1000 can also be used for ECU calibration based on the XCP protocol.

## ISIS

- CAN FD monitoring software TSMaster
- Cross-platform secondary development library



## IFICATIONS

PC Interface	USB 2.0, RJ45 Ethernet
Timestamp Precision	Microsecond-level high-precision timestamps
Driver	Cross-platform, driver-free design
Connector	Standard D-Sub, 9-pin
License	Supports all TSMaster paid licenses
Relay Type	Magnetic latching relay
Power Supply	USB-powered, external DC power (9 to 36 V)
Power Consumption	4 W
ESD Protection	±4 kV contact discharge, ±8 kV air charge
Enclosure Material	Metal
Dimensions	Approx. 178 x 113 x 38 mm
Weight	Approx. 420 g (net)/775 g (gross)
Operating Temperature	-40°C ~ 80°C
Operating Humidity	10% ~ 90% RH (no condensing)

## IFICATIONS

Connection Standard	High-speed CAN (ISO 11898-2 compliant)
Supported Protocols	Full support for CAN and CAN FD (ISO 11898-1 compliant)
CAN Baud Rate	125 kbps ~ 1 Mbps
CAN Frame Data Length	Up to 8 bytes
CAN FD Baud Rate	125 kbps ~ 8 Mbps
CAN FD Frame Data Length	Up to 64 bytes; supports BRS frames
Max Frame Rate*	Transmit: 20,000 frames/s; Receive: 20,000 frames/s

\*Single channel at 1 Mbps with a 0-byte data field

## INFORMATION

Manufacturer	Labirbo	Crilapoml
Network Device	TX1000	High-speed calibration device
Network Device	TX1000-AC001	POD module designed for use with TX1000

## INSTALLATION

- TX1000Pro device
- USB cable
- 12V 2A Adapter
- DB9 female to dual male signal cable (CAN)
- Category 6 gigabit ethernet cable
- Differential cable



USB Cable



12 V 2 A adapter



Differential cable



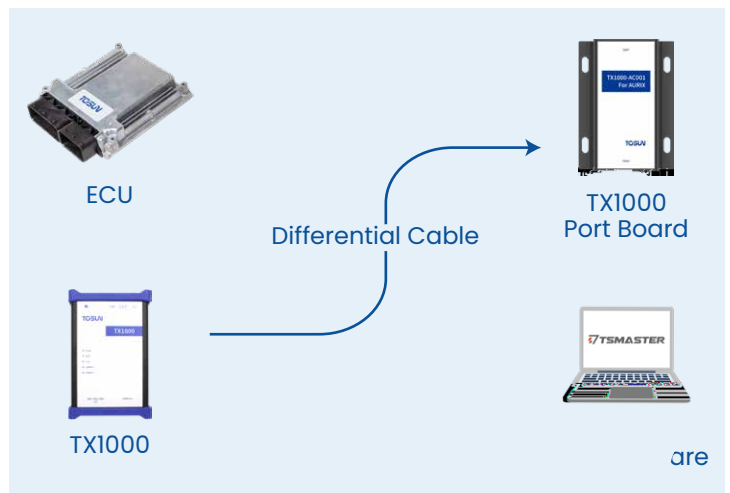
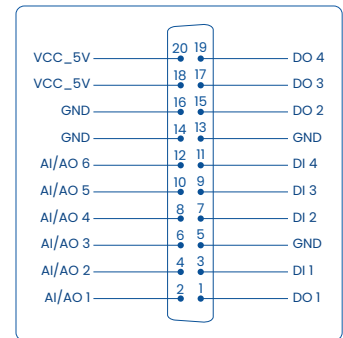
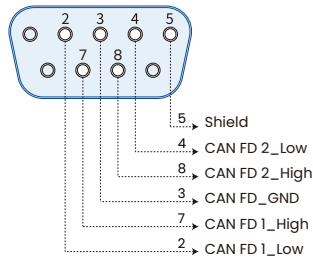
DB9 adapter cable (CAN)



Category 6 gigabit

## INSTALLATION

- Left: CAN FD 1/3
- Right: I/O



are